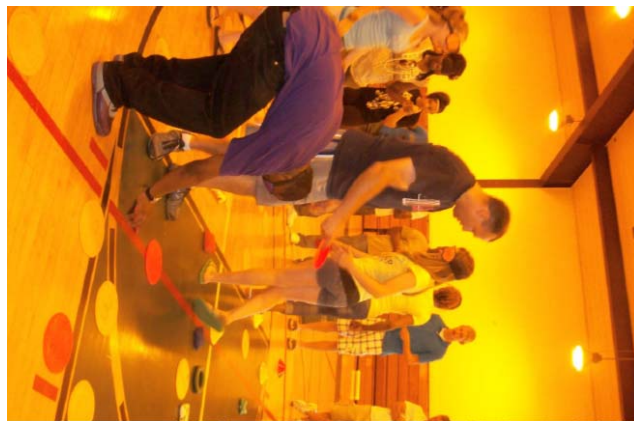
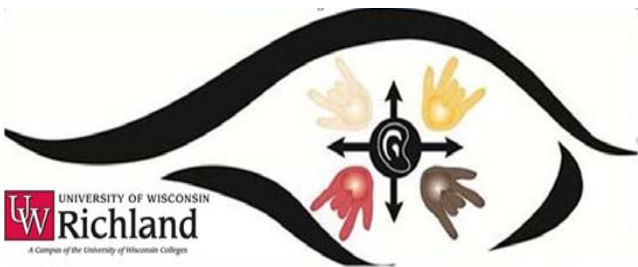




“Imagine raising your child with the understanding that he or she carries a unique gift that is needed by the rest of the world. A gift that must be uncovered and cultivated. A gift that he or she is responsible for caretaking and contributing to the rest of us so we can all move forward. If you can imagine that, you can create it.”

-Dawna Markova

Hear Big...Think Big...See Big



June 25–29, 2012



A youth development program designed to build academic, leadership, and college ready skills in first generation college-bound students.



The UW-Richland Precollege Program is Sponsored by the UW-Richland Office of Continuing Education and Outreach and UW Colleges with a grant through the University of Wisconsin System and Private Donors.

University of Wisconsin—Richland Precollege

The UW-Richland Precollege Program involves middle and high school youth in a mix of academic, team building, and recreational activities aimed at fostering a life-long love of learning and informed consideration of college options.



Urban youth from Milwaukee mix with rural youth from southwestern Wisconsin, and collaborate in teambuilding activities and academics, building their knowledge of self and others in a supportive professional environment.



Precollege Staff:

Patrick Hagen, Ph.D., CEO & Dean UW-Richland
Jessica Laeseke, Program Coordinator

For further information or to receive an application, Email rlnce@uwc.edu or
Call 608-647-6186 Ext 227

Precollege Program

UW-Richland's middle school and high school mentor programs prepare students for college success through instruction in academic subjects—ranging from mathematical, natural, and social sciences to fine arts and the humanities—and leadership training. The program begins in the student's 6th grade year and is officially launched the following summer with a residential program at UW-Richland.

Residential Program

Middle school students entering grades 7-9 receive instruction in a variety of college subjects, and participate in recreational activities. Students stay at UW-Richland's modern residential housing facilities, nestled in the beautiful hills of Southwestern Wisconsin's driftless region. As students progress through high school, new experiences become available. We invite a select group of students entering grades 10-12 to become teen mentors to younger precollege students. Through the **Precollege Teen Mentor Program**, students gain training and experience facilitating groups and working with youth.

Academic Year Activities

Our Milwaukee students have access to a large variety of free academic and tutoring services through the University of Wisconsin—Milwaukee Quest Program. Students will receive regular mailings from UWM about Quest opportunities. Richland area students will receive academic year opportunities through the University of Wisconsin-Extension 4-H and Youth Development Programs. Students must participate in either the Quest or 4-H program to remain in good standing with the UW-Richland Precollege Program.

Eligibility

Enrollment in the UW-Richland Program is limited.

Students are eligible to apply to the precollege program during their 6th grade year. Review of the student application, essay, and adult recommendation comprise the selection process.

Students applicants must be of the first generation of their family who will graduate from a four-year college. Applicant's families must have a low to moderate family income.

Students participating in the Teen Mentor Program must successfully complete the middle school precollege program and have demonstrated evidence of leadership and academic ability.



UW UNIVERSITY OF WISCONSIN
Richland
A Campus of the University of Wisconsin Colleges

UW-Richland Office of Continuing Education & Outreach
(608)647-6186 Ext. 227